



**MECHANICAL MACHINING OF EXCELLENCE
UP TO LARGE DIMENSIONS • 100% MADE IN MODENA**



COMPANY PROFILE

2024

EUROMECC is a company in the metalworking sector that has been operating for over 25 years (but has been active since the 1980s through a continuous path of evolution and growth) producing large-sized components for third parties

In the last 25 years, EUROMECC has specialized in:

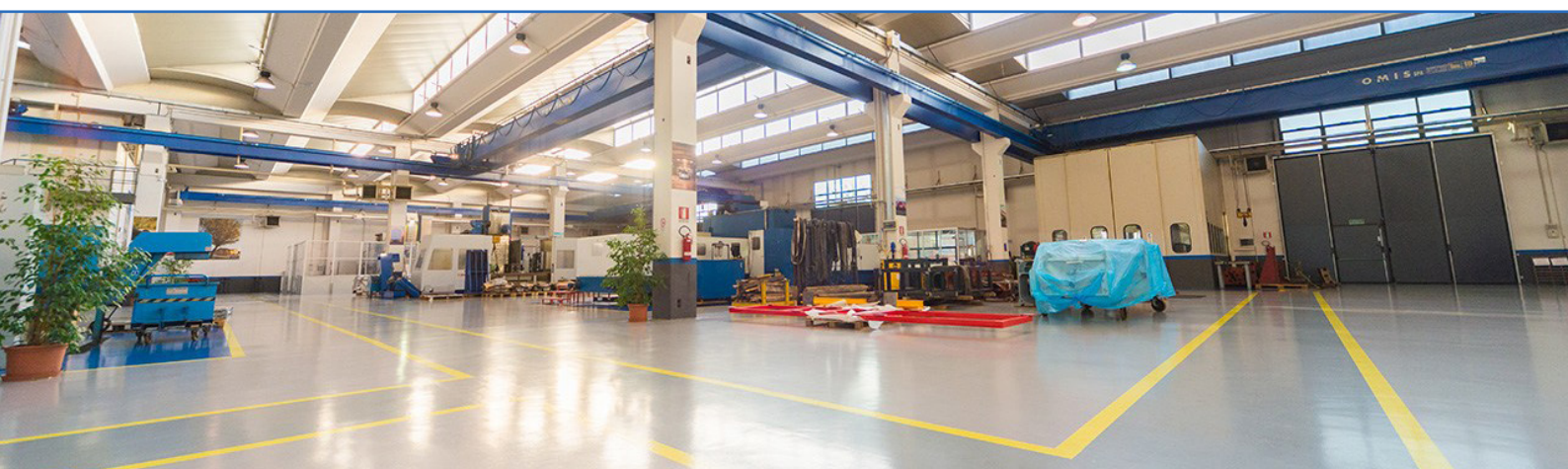
- dimensional machining and testing of automotive frames
- dimensional machining and testing of molds
- production of parts made from solid materials
- machining and testing of carbon fiber
- machining and testing of composite materials
- machining for the aerospace and defense sectors
- machining for research and nuclear sectors
- machining for other industrial sectors
- assembly and welding of automotive frames
- rework of automotive frames
- design and production of equipment
- restoration of automotive frames at the customer's site

Specialized in large dimensions, thanks to a cutting-edge machinery park that allows for the processing of any type of material, from common steels to composite materials, plastics, as well as alloys such as titanium and inconel, with dimensions up to 12 x 4 meters.

In addition to standard precision machining and the construction of metal structures, it is equipped internally with **modern CNC machine tools connected to 3D CAD/CAM systems**.

It also has an **internal metrology room** capable of issuing testing certificates, allowing it to be completely self-sufficient for everything related to the processing cycle and final testing of mechanical parts and molds.

Recently, an **assembly department** has also been created to provide customers with complete groups while maintaining EUROMECC's strengths: **quality and delivery**.



CERTIFICATIONS



EUROMECC IS A COMPANY CERTIFIED TO UNI EN ISO 9001:2015

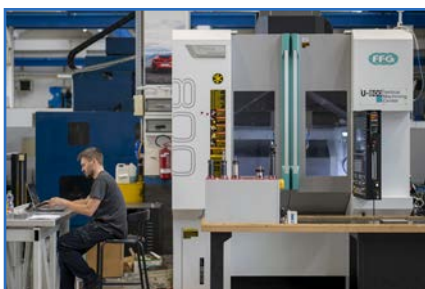
The certification body TUV Italia has confirmed that Euromec's quality management system complies with the requirements of the UNI EN ISO 9001:2015 standard for all mechanical processing carried out according to customer specifications. This is a great satisfaction for the company and an additional guarantee of quality for all customers.



25 years of field experience: it is the quality of our products and the satisfaction of our customers that speak for us.

Professionalism and availability: no project is impossible when combining your needs with our expertise.

Precision and Research: we continuously invest in technology and research because our customers always deserve the best.

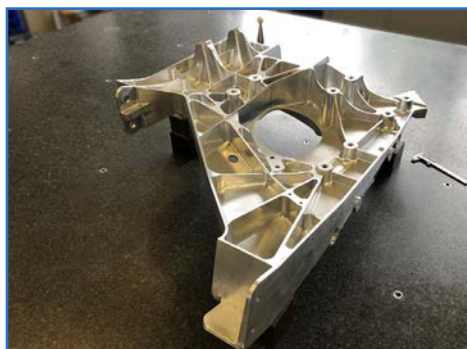


The operational capabilities of EUROMECC are extensive: it has CNC machines with 3 and 5 axes that cover a working range **from small sizes up to 12 meters:**

- portals (up to 5,000 x 2,300)
- mobile columns (up to 12,000 x 4,000)
- fixed tables (up to 3,000 x 2,000)
- 5-axis CNC for small sizes
- compact machines
- vertical and horizontal machines
- traditional equipment for tooling
- welding and adjustment department
- assembly and rework department

EUROMECC operates in a fully air-conditioned area of 5,000 m², allowing for the monitoring of machine temperatures and the processed components, as well as maintaining a clean and comfortable working environment.

Testing is conducted in a **climate-controlled CNC metrology room**. The metrology room features a CNC measuring machine "POLI TCX 4000," entirely made of granite marble, in a closed and air-conditioned workspace for internal testing and third-party services, with a working range of 6000x2200x1500 mm and a tolerance on the working volume of 0.008 mm.



AUTOMOTIVE

EUROMECC works for the leading automotive brands of excellence worldwide, producing and testing automotive frames, molds, components for frames, solid parts, and also large-sized components thanks to a wide range of CNC machines with 3 and 5 axes, up to 12 x 4 meters.

AEROSPACE AND DEFENSE

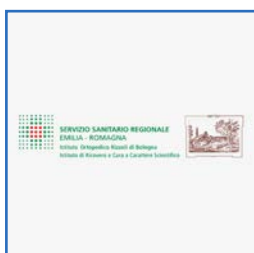
Machining and testing of components for the production of satellites, space vehicles, and submarines, fully complying with the highest national and international construction and production standards.

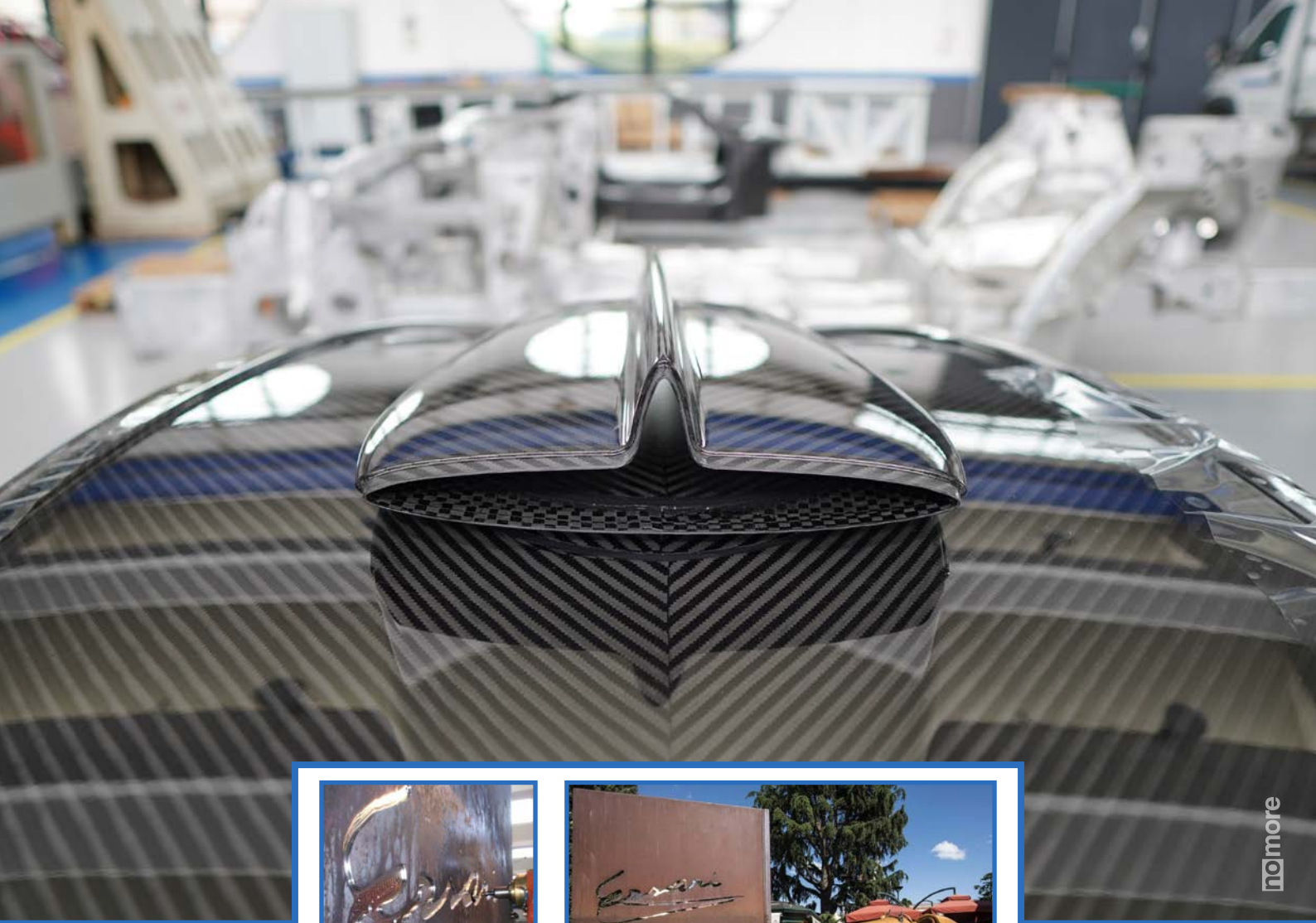
RESEARCH AND NUCLEAR

Processing and testing of individual components and complete groups in the field of particle research and nuclear energy, fully adhering to the highest national and international construction and production standards.

CARBON FIBER AND COMPOSITE MATERIALS

Automotive frames and components made from carbon fiber & other composite materials.





no|more

*EUROMECC proudly manufactured the monument
"Signature of Enzo Ferrari", inaugurated in 2008
in the main square of Maranello.*

EUROMECC

Euromec srl | Mechanical Machining of Excellence
Via Dalla Costa Raimondo, 165 - 41100 Modena (Italy)
Tel. +39 059 260753 / +39 059 260845 - Fax +39 059 2550431
P.I./VAT# IT02572010367- DUNS: 513870423
Email: info@euromecsrl.eu - Website: www.euromecsrl.eu